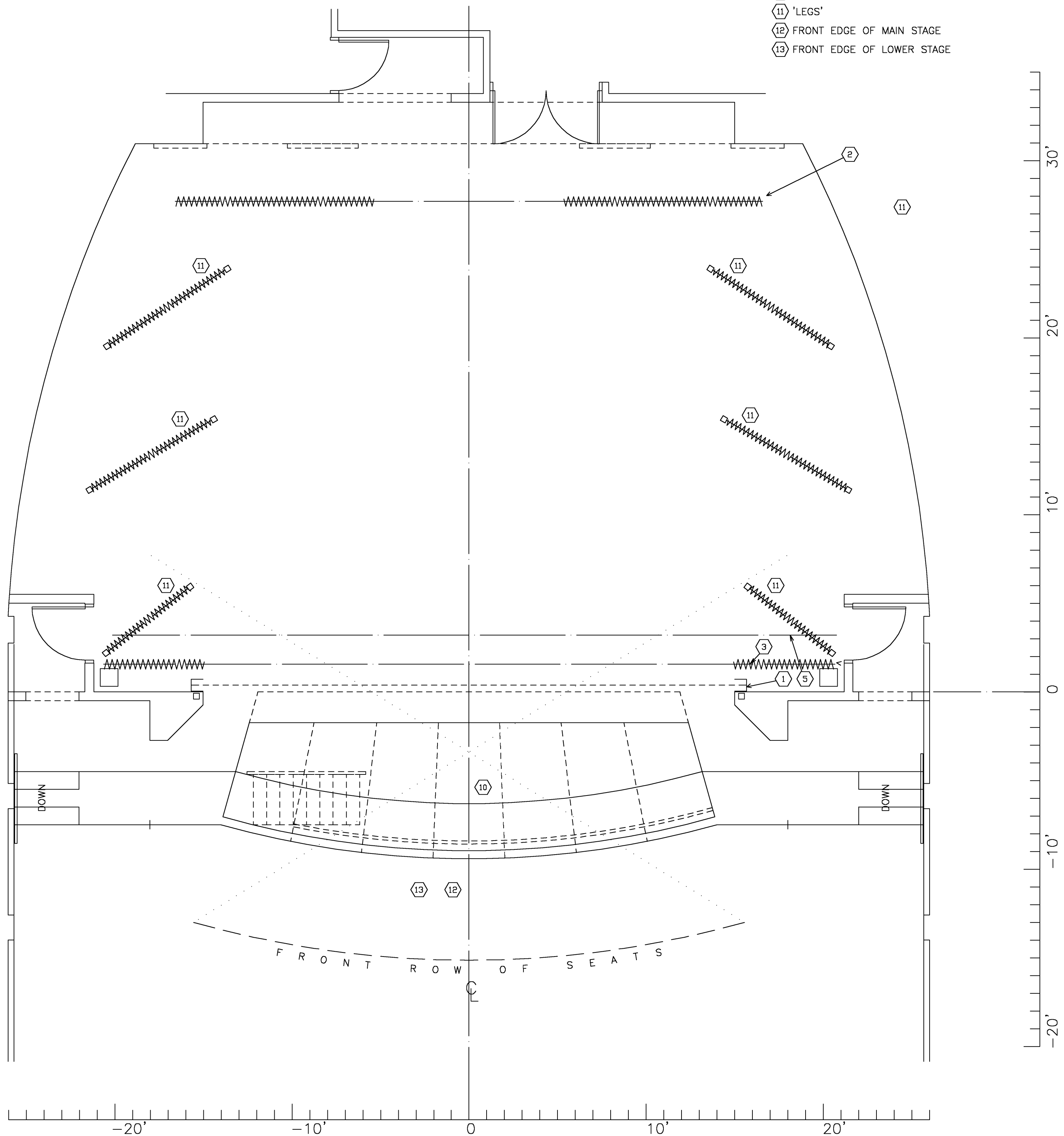


# STAGE ELEVATION

- ① FIRE CURTAIN
- ② REAR TRAVELLER CENTRE SPLIT
- ③ HOUSE CURTAIN
- ④ FIRE/SMOKE POCKET
- ⑤ LINE OF MAIN VALANCE
- ⑥ STAGE FLOOR LINE
- ⑦ SIDE LIGHT PIPE
- ⑧ CATWALK
- ⑨ LIGHT WELL
- ⑩ COVERED ORCHESTRA PIT
- ⑪ 'LEGS'
- ⑫ FRONT EDGE OF MAIN STAGE
- ⑬ FRONT EDGE OF LOWER STAGE

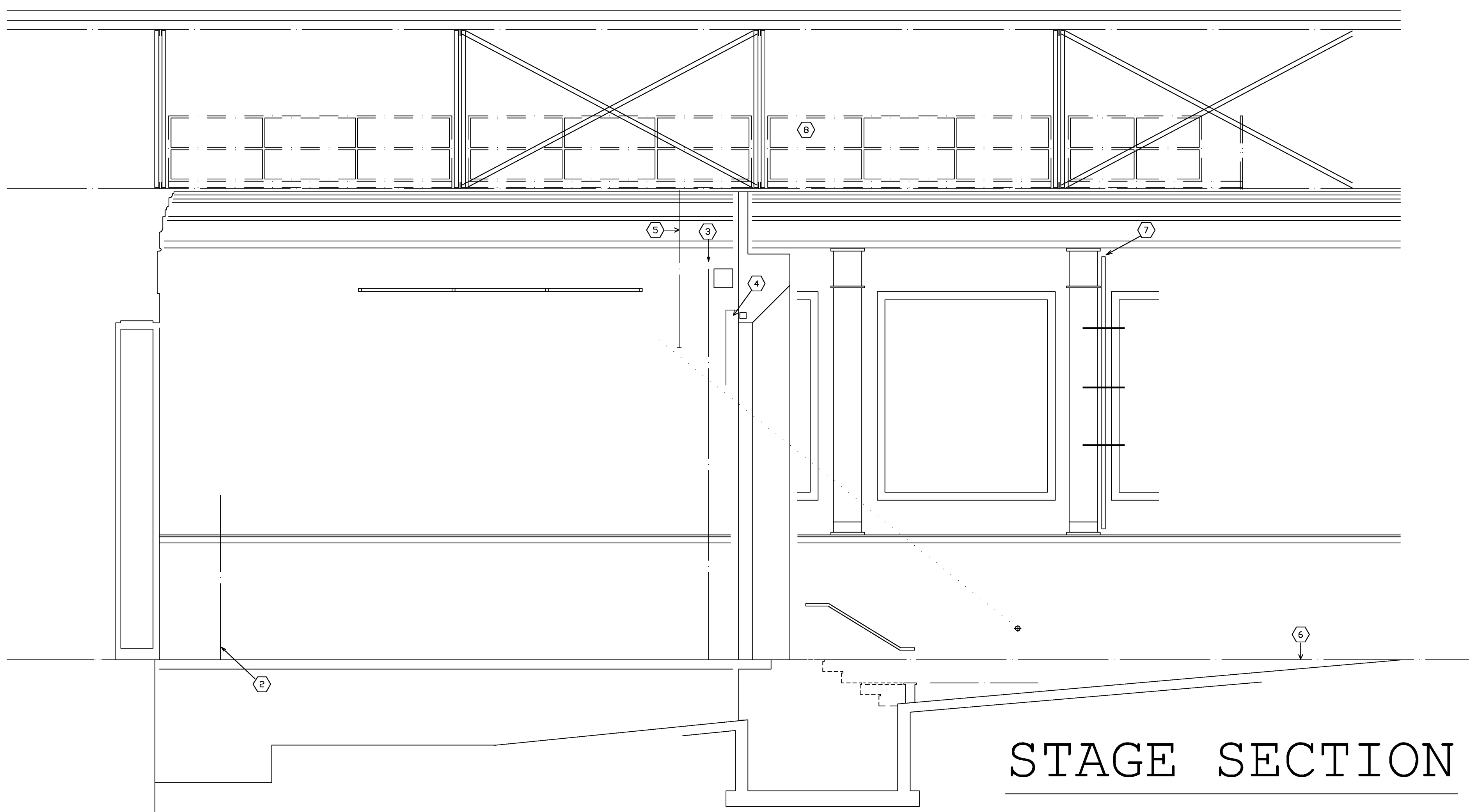


# STAGE PLAN

production name scene 1/4" = 1'-0"	production name		
	act	date	
	scene	drawn by	
	1/4" = 1'-0"		

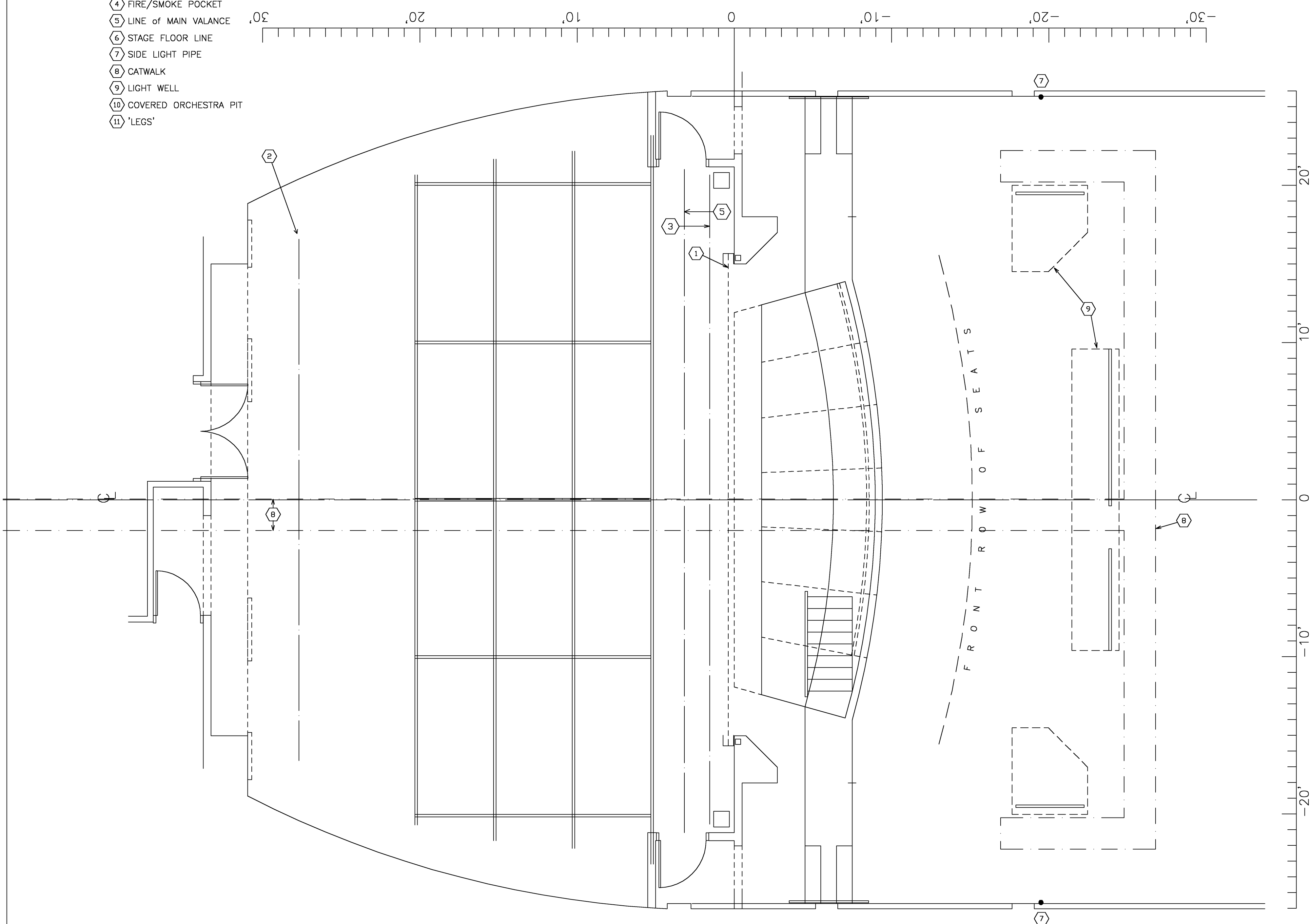
PALACE THEATRE  
 710 DUNDAS STREET  
 LONDON, ONTARIO

OWNED and OPERATED by  
**LONDON  
 COMMUNITY  
 PLAYERS**



STAGE SECTION

- ① FIRE CURTAIN
- ② REAR TRAVELLER CENTRE SPLIT
- ③ HOUSE CURTAIN
- ④ FIRE/SMOKE POCKET
- ⑤ LINE OF MAIN VALANCE
- ⑥ STAGE FLOOR LINE
- ⑦ SIDE LIGHT PIPE
- ⑧ CATWALK
- ⑨ LIGHT WELL
- ⑩ COVERED ORCHESTRA PIT
- ⑪ 'LEGS'



LIGHTING PLAN

drawing	production name		
	act	date	
	scene	1/4" = 1'-0"	drawn by

PALACE THEATRE  
710 DUNDAS STREET LONDON, ONTARIO

OWNED and OPERATED by  
**LONDON COMMUNITY PLAYERS**